

# AROUND THE DALE

The Newsletter of the Calderdale Methodist Circuit

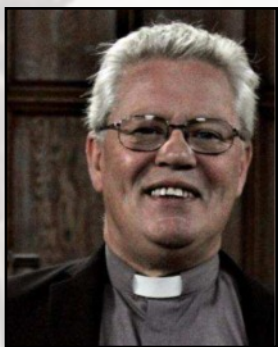
---

Number 27

December 2021

---

## A message from the Revd Colin Sherwood



Dear Friends

On the final Friday of November, I enjoyed singing my first carols of the year as a large church and community group met to switch on the Christmas Tree outside of Christ Church. Coffee and mince pies followed, and, despite unruly equipment, we enjoyed a good sing.

One of my favourite carols is silent night and as we sang it my attention went to that line, 'all is calm all is bright' and I found myself transported into another place, another time as I pondered those words.

Perhaps when we hear the story of angels and shepherds, we envisage a small gaggle of shepherds sitting round a fire with absolutely nothing on their

minds. I wonder what those shepherds talked about around the campfires. I wonder if it was calm and still and bright and clear. Or perhaps their world and our world had more in common than the Christmas songs might suggest.

It was tough being a shepherd, at this time society shunned them, they were outcasts and they probably smelt bad. You would not want to be a shepherd at that time.



The truth is that Jesus did not arrive in a Victorian world where all is calm and all is bright and where Ebenezer Scrooge wakes up in the morning having finally seen the light, buys a whopping turkey, pays for Tiny Tim's surgery, and gives

*Continued on next page . . .*

*Continued from previous page . . .*

Bob Cratchit a raise.

If we listen only to the hymns, we could come away thinking that Jesus came upon a midnight clear, on a silent night, where all is calm, all is bright, but do not kid yourself, for it was a place of unrest and struggle.

There have always been these challenges in the world and yet God comes to live amongst us. That is why, amid these very strange times, this glorious message continues to relate to you and to me.

God took on human flesh, he lived among us and by his death on the cross, he cancelled our debt, leads us onto eternal life, where I guess, it is indeed calm and bright.



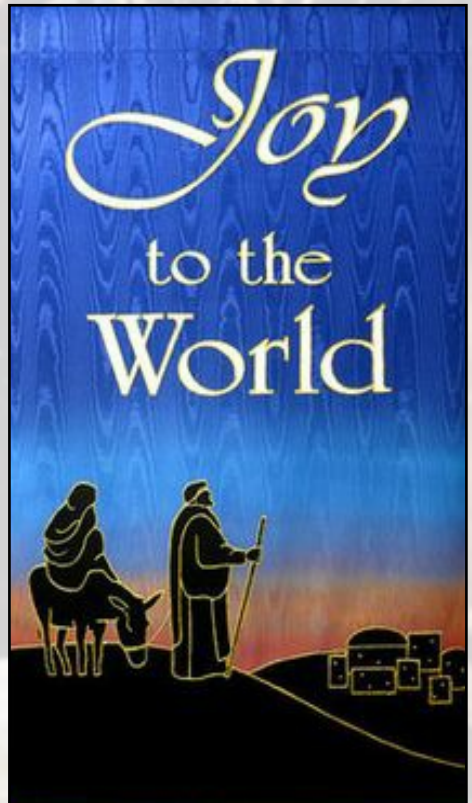
The waiting is almost over, Christmas is very near, so let us prepare to celebrate the Christ Child, Jesus, the one who came into the world, a busy and chaotic world. God made man, the one who loves us and keeps on loving us.

Wherever you may find yourself this Christmas, on behalf of Reverend Mark, myself, and each of the staff team, I wish you a Christmas filled with love,

joy, and peace.

I finish with the words of a Christmas blessing,

*May the joy of the angels,  
the eagerness of the shepherds,  
the perseverance of the wise men,  
the obedience of Joseph and Mary  
and the peace of the Christ-child  
be yours this Christmas;  
and may the blessing of God Almighty,  
the Father, the Son and the Holy Spirit,  
be among you  
and remain with you always.  
Amen.*





# Community Outreach

## Food Support Drop In (FSDI)

*'We aim to provide support to the homeless and vulnerable that are in need of a food parcel, and guidance to help them to improve their current situations'.*

### New Ebenezer Hope Help and Love



**'Winter and the Christmas season can be a daunting time for many'.**

The FSDI works with the Gathering Place (next door) and plays a key role in providing support in the town. The Gathering Place is now undergoing major renovations to improve the facilities for the winter shelter and other projects it undertakes. Your support for the food bank and these projects are essential for us (especially during this time) to provide the services to help the vulnerable people in times of crisis.

**For details how you can donate see below:**

Currently we are handing out food parcels to around 100 individuals and 50 families each week. Most of our food is paid for by donations and fund raising. Therefore we are grateful for

your support to help with supplies and to keep this going.

#### Items we need

- Jars of pasta sauce
- Baked beans
- Tinned soup
- Jars of curry sauce
- Rice
- Tinned macaroni cheese
- Tinned spaghetti bolognese
- Weetabix
- Breakfast cereal

The FSDI is open on a Friday and Saturday morning for receiving donations and distributing food. If you are unable to drop food during those times or you wish to donate to help towards the purchase of food please contact: **Rebecca Dixon:**

[rebecca@christiansotogether.org.uk](mailto:rebecca@christiansotogether.org.uk)  
[Tel:01422647390](tel:01422647390)

#### Financial support:

**Directly to our bank account using the details below (one off transfer or a regular standing order):**

Christians Together Calderdale  
Sort code 40 52 40  
Account number 00034017

**Information about other projects please see the Christians Together website:**

<http://ctcthegatheringplace.org/our-projects>

# Creative Space

At **NEW EBENEZER**  
St James Road, Halifax  
We meet monthly: Next one  
**Tuesday 7<sup>th</sup> December**  
**10am-12.30am**

Join us for a time of creativity inspired by the scriptures, a space where we can come together and worship God through our creative expression. This can be any artistic form and is open to all artistic abilities.

We will supply some basic drawing or painting materials but best for you to bring what you would like to use.

**Coffee and chat at 10am**, followed by scripture sharing at 10.30am and then an hour of Creativity.

**Bookings only.** To reserve a place or for more information contact Kim Wade:

[kimjwade0@gmail.com](mailto:kimjwade0@gmail.com)

See also <https://www.facebook.com/kimwademeditativeart>

If you wish to know more about what goes on at New Ebenezer or further information about any of the features in this newsletter please contact :  
**Angie Ross Tel: 07588329195**

Email: [newebenezer2019@gmail.com](mailto:newebenezer2019@gmail.com)

Visit the website:

[www.calderdalemethodistcircuit.org.uk/churches](http://www.calderdalemethodistcircuit.org.uk/churches)

## Our Trustees



Geoff Butler



Colin Sherwood



Lynne Lupton



Bob Young

# Which magazine is best?

The search is on for Britain's best church magazine. Entries are now invited for the annual competition run by the Association for Church Editors (ACE), which is an independent rather than a commercial organisation. The competition has been running since ACE started over 20 years ago.

"Church magazines are often a forgotten but effective means of communication," says Sally Churchus, Chair of the national organisation, "so we are keen to encourage editors everywhere."

For the coming 2022 competition, which closes on 7th February, awards will be made for A5 magazines which include all or some colour printing. The Gold Award winner will receive the John King Trophy, to be held for one year,



while Silver and Bronze Awards will receive an inscribed trophy to keep, together with a Certificate of Excellence for display.

A panel of judges assesses each magazine, giving points for various aspects including cover design, headlines and clarity of the Christian message. The prize-giving in the summer is open to everyone, and will include a lecture by a Keynote Speaker and talks on various ways to improve your magazine. The date and venue will be announced in due course.

[www.churchmag.uk](http://www.churchmag.uk)

The Circuit office has Entry Forms







## ACE Magazine Awards 2022

The Association for Church Editors is launching its next Awards to celebrate and recognise the work of church magazine editors and their editorial teams.

### Who will be eligible to take part?

- The 2022 Awards are for A5 size paper magazines with colour printing, even if it is just on the cover.
- The Awards are open to all Christian denominations that believe in the Holy Trinity.

### Types of Awards

- The Gold, Silver and Bronze Awards will receive an inscribed trophy to keep, together with a Certificate of Excellence.
- The Gold Award winner will receive the John King Trophy, to be held for one year.
- The winning entry in each of the following categories will receive a Certificate of Excellence:

*Cover design*

*Overall layout & structure*

*Headlines*

*Use of graphics*

*Clarity of the Christian message*

*Intended readership appeal*

- Entries not selected for one of the main Awards, but are considered to be of a sufficiently high standard, will receive a Certificate of Achievement.

### How to submit your entries:

- Please send two copies **each** of two different issues of your magazine produced during the last twelve months.
- The closing date for entries is Monday 7th February 2022.
- The review process will be based on printed magazines and not electronic versions.
- Please send your 4 magazines **plus** entry form to:  
Angela Price, 14 Browns Way, Aspley Guise, Milton Keynes MK17 8JA

### Please note:

The Awards will be presented at our Annual Meeting, date and venue still to be decided.

# Illingworth Moor

Activities at Illingworth Moor are gradually resuming. Since September the Boys' & Girls' Brigades are meeting again, as are the Local Activity groups, such as indoor kurling, pilates, keep fit, art & craft groups.

The Good as New shop has reopened. At the moment it is open on Wednesdays and also on Fridays as from 10<sup>th</sup> December.

The café is now fully open and is proving popular, including Friday lunches with customers using the Access bus.

The 24<sup>th</sup> October saw the dedication of our Rainbow Waterfall. This is made up of about 4,000 flowers, knitted and crafted by church & community members, and was dedicated to those who we have lost, or have served their community during the pandemic. We also had a poppy display on the outdoor cross for Remembrance Sunday.

54 shoeboxes were filled, and collected by representatives of Teams4U, to be dispatched to Eastern Bloc countries.

We now have a new Children & Schools Worker, Tracy Brennan. She is coordinating "Open the Book" at Whitehill school and is also planning the same at Bradshaw school together with members at St. John's Church, Bradshaw. She is also preparing a Christmas Messy Church.

Members of our church also helped at the Victorian Schools Heritage day at Mt. Zion.

## Christmas activities

The Christmas Fayre on 27<sup>th</sup> November was a very successful community event; there was food & many crafts & games for people to enjoy.

Our annual Toy service is 5<sup>th</sup> December and the Carol & Christingle service will be on 19<sup>th</sup> December at 6.00pm.

Messy Church is on 9<sup>th</sup> December and the traditional Boxing Day football match will be at 11.00am at Natty Lane.

Churches Together in North Halifax - Carol singing at Morrisons supermarket will take place on Saturday 18<sup>th</sup> December.

HC







**Come and celebrate Christmas at** 

*Saturday 4<sup>th</sup> December*  
**Christmas Coffee Morning 10 – 12noon**  
Coffee and cakes                      Stalls                      Children's activities

*Sunday 19<sup>th</sup> December*  
**Carol Service for all 4pm**  
Come and sing Carols and listen as the story of the first Christmas unfolds.

*Friday 24<sup>th</sup> December*  
**Crib Service 4pm**  
Be part of the story – an informal celebration for the young and not so young!  
**Communion Service 5pm**  
A special service to which all are invited.

**Christmas Day – Hooray!**  
**Christmas Worship 10am**  
Have a cracker of a celebration at this joyful service.

*Sunday 26<sup>th</sup> December*  
**Boxing Day Carols 10:30am**  
The celebrations continue.

May you know Peace,  
Joy and Love this Christmas

[www.ChristChurchHalifax.co.uk](http://www.ChristChurchHalifax.co.uk)  
Events subject to Covid-19 restrictions





## Brighouse

Greetings from BCMC.

We are now in the season of Advent, a time of expectation and preparation. A time of Hope as we prepare, once again, to welcome the Lord Jesus into our hearts and lives.



The first Sunday in Advent, was a special day for us at Brighouse Central as it was our church Anniversary. Revd Helen Cameron, Chair of the Northampton District, led us in a truly wonderful service. Forty years ago three Methodist churches in Brighouse came together to form Brighouse Central Methodist Church, so named because we wanted to be a church in the centre of Brighouse, central to the community around us.

Although it was an exciting and joyous occasion many had faced difficult decisions in closing the doors on their own church to step out in faith and join other worshipping Christians.



Lane Head was the first church to be closed, sold and made into private dwellings. Everyone moved into Park Methodist in the town centre whilst

alterations were made to Bethel which finally became our new church, Central.

Shortly after coming together at Central, again in the Advent season, an act of arson set the front of the worship centre on fire. As flames leapt through the roof the beautiful stained glass window was destroyed along with the organ and roof. The Nativity Scene, newly created, was also destroyed. It was all very heartbreaking.



Worship moved into the schoolroom whilst the worship centre was renovated. A new window was made from salvaged pieces and pieces taken from a stained glass window that had graced Lane Head chapel. A new computerised organ was installed and the front of church redesigned and refurbished including a large wooden cross which hangs centrally under the new window.

*Continued on next page . . .*

During this period people from across the three churches came together - working together, sharing together and supporting each other. Everyone felt connected. At a later point we were further strengthened by the addition of folks from Trinity as their church also ceased to meet.

Out of darkness comes light and out of despair comes Hope.

Brighthouse Central had a vision to improve the present building, making it more accessible to our community and with more and better rentable rooms a chance to raise our income. This in turn would help us to be a better community church.

After a long and difficult journey we have sadly had to draw a line under that for the time being. We have the plans in place should we wish to proceed at a later date but because of rising costs and other structural repairs that need to be dealt with the Project, for now, has had to close. However,

we go forward in Hope as we continue to serve the people of our town and build ourselves up as people of God, sharing the Good News of a risen Christ who is accessible to all.

On the 19th December we have a Big Family Christmas Day - Nativity in the morning, musical entertainment and fair games in the afternoon, then Carol service in the evening at 6 pm.

Everyone is most welcome to join us at any part of the day. Refreshments will be available. Further details can be found on our Facebook Page.

We pass on our Best Wishes and Love to you all and hope that whatever your church and families have planned you have a beautiful and Blessed Christmas. God is Love and I pray that our circuit will become strong and United as we share His love with our communities, our church families and with each other.

Every Blessing

*Susan Yates - Senior Steward*





## St Andrew's



Sending love and 'Season's Greetings' to all our friends in the Calderdale Methodist Circuit – it doesn't seem possible that we are now in the 2021 Advent Season after another quite difficult year for everyone due to still being governed by Covid 19 **BUT** all through the year we have managed by putting our trust in our Living Lord to get us through this difficult time.



Our poster giving details of all our Christmas Services has the Words 'Jesus is The Reason for the Season' printed on it and we are working hard to make sure that is what happens as we bring our Toys and Gifts for others as we support the work of The Ebenezer Drop-In Centre, The Gathering Place and The St Augustine's Centre in the hope that someone not expecting to receive any

gifts at Christmas will feel loved and cared for during this special time of year as they receive a gift this Christmas Time.

We are taking out our Christmas Gift Bags again this year to those of our Church family who are no longer able to come to Church. The bags will be filled with small gifts, lovingly given by Church friends together with a knitted Christmas Tree which will have a greeting saying "Peace be with you this Christmas".



Christmas Trees will also be given to Children associated with St Andrew's. We are very grateful to all friends who have knitted the trees (so soon after knitting Poppies for Remembrance Day



this year which we decorated the tree in the Church garden with).

It was lovely to see how the different Churches around the Circuit and Town had used

this time to remember loved ones not only those who lost their lives through war but also those who died during the Covid19 pandemic – many fitting tributes to those we have loved and lost over many years.

*Continued on next page . . .*

*Continued from previous page . . .*

During the many months of lockdown and the uncertainty that this brought with it, the Church Family at St Andrew's have continued to have their eyes fixed on the future of our Church and our Church Development Team have continued to work extremely hard to further our plans for 'A New St Andrew's Church on Huddersfield Road' - Here is an update of where we are at the moment –

### **An Update on the Project for a New Dry Warm St Andrew's!**

St Andrew's is well known in Calderdale Circuit for its leaky roofs and its collection of buckets to collect the incoming rain! As well as that problem there are other problems too - no insulation, changes of level, sprawling layout.

We want to demolish the buildings and build a much more suitable warm dry good-for-the-planet replacement. The new building will have two main rooms, a social area/café area as well as a kitchen, toilets and a number of storage areas. There will also be an outside enclosed garden/play area. Planning permission has been granted. The Circuit has pledged a generous sum, the District also. We now just need the rest of the money! **We have a target to raise of just over £1,000,000.**

### **How's the fund-raising going?**

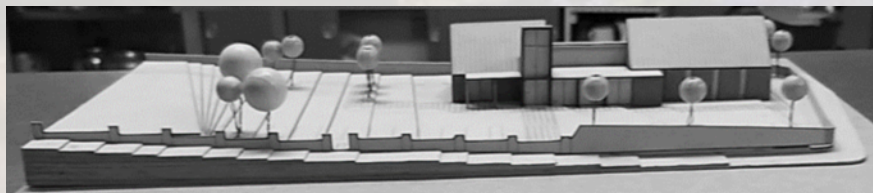
So far we have raised **an amazing £735,000**. This has come from donations by church members and well-wishers, profit from events such as afternoon teas, concerts and other activities including popular Hoe Downs and quizzes.

The former caretaker's house has been sold. Calderdale Circuit and Yorkshire West District have pledged a generous total of £120,000. We have been awarded a wonderful grant of £90,000 from Methodist Insurance and promised £15,000 from another grant-making organisation.

Recently we were absolutely delighted to receive over £100,000 from the estate of one of our church members who died last year. Such a generous bequest! Our fund-raising has of course been affected by the pandemic – we had to cancel various events and have raised less money by now than we expected to have.

We're still making grant applications and again starting to run concerts and other fund-raising events. It will not be easy to get all the money we need but if we want to build the new church, we will with God's help get there.

We send God's Blessings to all for a Christ-filled Christmas and Every Good Wish and many blessings for 2022.







Be assured the **Methodist** people are praying for the **world** at this time



The **Methodist Church**  
www.methodist.org.uk

Calderdale  
**Methodist Circuit**

**Circuit Website**  
[www.calderdalemethodistcircuit.org.uk](http://www.calderdalemethodistcircuit.org.uk)

It is hoped that Issue No. 28 of this News-letter will come out soon. Material for the next issue can be sent to [office@calderdalemethodistcircuit.org.uk](mailto:office@calderdalemethodistcircuit.org.uk)

Please send items as soon as you have them available.

**Around the Dale**

The Newsletter of the Calderdale Circuit of the Methodist Church