

AROUND THE DALE

The Newsletter of the Calderdale Methodist Circuit

Number 32

April 2023

A message from The Revd Vicky Atkins

Dear Friends

Easter is for us a time of celebrating the fact that life goes on. We are soon to journey from the despair of the cross to the hope that the empty tomb provides us with.

Having moved into the Circuit six months ago we inherited a pond. Having never seen anything living in the pond I assumed it was empty. That was until last weekend. My husband decided to clear the leaves and debris floating on the top of the pond and to our surprise discovered five very healthy looking fish.

I am not comparing the empty pond to the empty tomb, though it felt somewhat of a miracle that the fish had survived six months without food. That was until Google explained that during winter fish hibernate and stop feeding. Nevertheless those fish are pretty resilient given the amount of dirt, tree

debris and leaves they have been sharing their home with these past few months, quite an inhospitable environment to live in.

This has made me think about how resilient those early followers of Jesus were. The climate in which they chose to continue serving Jesus would have been very inhospitable;

there would have been lots of opposition. Nevertheless they continued to spread Jesus' message of inclusive love which we continue in the church today.

Our context is very different to those early disciples we don't face the same challenges that they faced whilst trying to follow and serve Jesus. We do

encounter challenges however and need to be build resilience in our own 21st century way. Today I Googled the word Easter looking for images and was presented with hundreds of bunnies! Resilient disciples have to navigate a world where Easter is about sharing chocolate eggs not sharing sacrificial love.

Continued on next Page:



Continued from previous page . . .

We need to find ways to support and nurture our faith so that the miracle of Easter continues on within our hearts and our daily actions.

Faith

So my prayer this Easter is that the God who calls us will equip us to share the life giving message of radical grace, love and new life in what at times feels like an inhospitable environment.

Peace and love

Rev Vicky



Hebden Royd Methodist Church

The winter months and high energy bills drove us to worship in the Church Hall for 2 or 3 weeks each month. What started as necessity has been a spiritual benefit . There have been lots of positive comments about worship and we have been able to try out different styles of worship. The congregation have been very appreciative. Even though we are going to return to worship in the chapel, we plan to use the hall for some services each quarter. (And yes, our energy bills have been lower).

Our Sunday Club continues to meet in the Green Room when they can't use the hall ... also in the corridor and the entrance when they need more space.

We have been a Warm Space on Friday mornings and although few people came, it did mean that we could afford to heat the hall for the Soup Dragon and our latest Kid's Matter course. We are gradually becoming a community hub on Fridays.

Another thing we are trying out is meeting in the White Swan in Hebden Bridge on four Thursdays during Lent. This is a joint venture with the Beacon Church and other local congregations. It is an opportunity to sing our praises and reflect on the journey to Easter.

CHURCH WORKER - UPPER VALLEY

We are seeking a Church Worker in the Upper Valley section of the Circuit, which encompasses the churches of Todmorden, Hebden Royd, Blackshaw Head, St Paul's in Sowerby Bridge and Heptonstall.

This is an opportunity to be involved in the leadership and growth of the Methodist churches in the Calderdale Circuit.

As a Church Worker you'll be home based (although an office will be available in one of the churches if required) and will work alongside an ordained minister across a group of churches, walking alongside the people of God, sharing in the good times and bad.

You'll have experience of organising and leading activities, events, and developing initiatives within churches. For those who wish, and are appropriately qualified, this may involve the leading of worship.

Building up the churches, you'll be at the front of developing links with the local communities they serve, all with a focus on sharing the good news of Jesus.

If you have a love for people and heart for mission, this role could be for you.

The appointment requires an enhanced DBS disclosure and satisfactory references.

An occupational requirement exists for the postholder to be a practising Christian.

NEXT STEPS & MAIN TERMS

Hours of work:	20 hours per week, worked flexibly in agreement with the Line Manager, which may include some evening and weekend work. You will not be expected to work on more than five days in a calendar week.
Contract:	Permanent
Salary:	£15,414 per annum, with enrolment in the Circuit's workplace pension scheme
Location:	Home based (but an office will be available in one of the churches if required)
Next steps:	For more information please contact Revd Vicky Atkins: superintendent@calderdalemethodistcircuit.org.uk or for an application pack, please contact the Circuit Administrators: office@calderdalemethodistcircuit.org.uk
Closing date:	12 th April 2023 at 12 noon
Interview date:	24 th April 2023
Start date:	As soon as possible

To learn more about our Circuit and the work that we do, please visit:

www.calderdalemethodistcircuit.org.uk

From Ruby to Bonnie.....

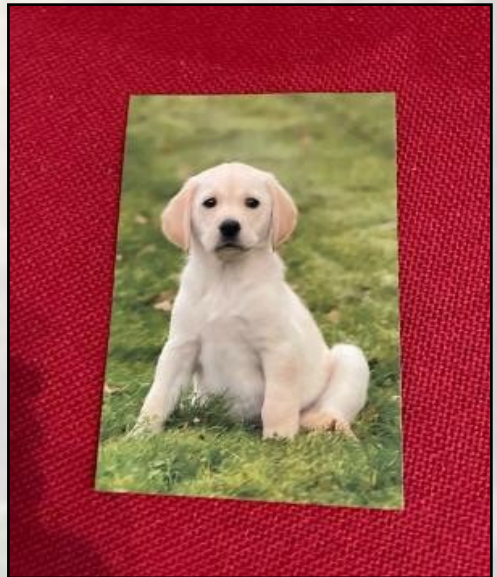
Some time ago our Pilots group (which sadly is no longer running) sponsored a “buddy dog” Ruby who was trained to support someone with special needs (in a similar way to how a Guide Dog supports a blind person, but catering for different needs).

We are pleased to tell you that Ruby is now fully trained and has gone to work in a family where she will be supporting Jennifer in her everyday life!



Our lovely Christ Church angels were blessed during the service on 11th December, and distributed in the neighbourhood a few days later.

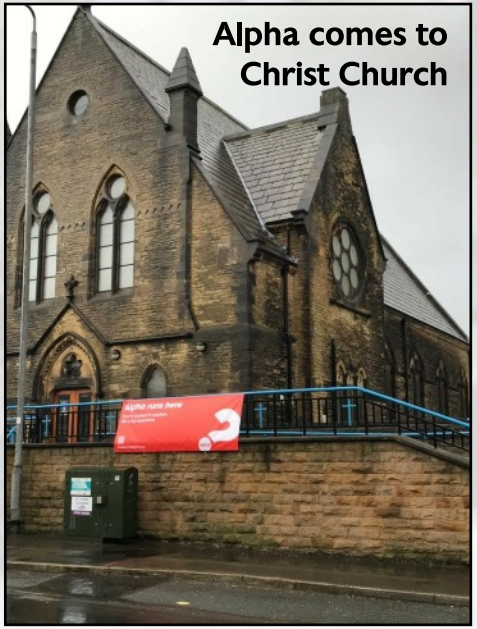
Each angel was knitted as a gift of love from God, and they have been well received in the area.



Well done Ruby! We are now pleased to introduce Bonnie the Golden Retriever Labrador who Christ Church are currently sponsoring! We are sure with her training Bonnie will follow in Ruby’s footsteps and also become part of a family and a great support for someone who needs help. She’s very cute I am sure you will all agree!



What a splendid event our Christmas Event was on 3rd December! Well done to everyone who helped in any way to make it such a great success!



St Andrew's



St Andrew's – Now in the season of Lent and we are sharing this very special time of year out in the community as our Knit and Natter Group have prepared this **EASTER POST BOX TOPPER** – and doesn't it look great?



What very clever, inventive and talented folks we have at the Knit & Natter group – and how very kind of Royal Mail to put a post box just opposite St Andrew's Church on Huddersfield Road! You may be able to see that Easter Crosses are hanging around the edge of the post box with a message inviting folks to take one as they pass the post box during their everyday journeys – We also have

around 100 knitted Bunnies which hold Easter Eggs to be given to the youngsters who attend our Play Group and Parent & Toddler groups and will also be taken to Salterhebble School when our Open the Book Team visit the School to take an Assembly Service before the end of term.



St Andrew's have been offering a 'Warm Welcome Space for All' in the Moore Hall on Tuesday afternoons from 1.00 p.m. – 5.00 p.m. Sadly this has not got off the ground visitor wise, but our helpers have been there each Tuesday ready and waiting to offer a friendly welcome to any who needed a warm space and warming drink – we shall have to see what the future holds for this initiative.

Our monthly Young Peoples Youth Group which meets on a Sunday afternoon is going well and we look forward to this going on and flourishing in the future.

The Monthly Wednesday Afternoon Group continue to enjoy listening to various interesting talks and are looking forward to celebrating the Coronation of King Charles III in the coming weeks.

Continued on next page . . .

Continued from previous page . . .

Our 'Community' Groups – i.e. The Monday Kitchen Luncheon Club, Knit & Natter Craft Group and Toddler & Parent Group are all continuing to thrive and again look forward to their own Celebrations for the King's Coronation celebrations. Before that the Monday Kitchen Luncheon Club will have a celebration of another kind as one of our Ladies will be celebrating her 100th Birthday later this month.

It is amazing to see the fellowship and friendships that have evolved since we began the Luncheon Club with many of our guests in the late 80's and 90's age groups – they are a lovely, happy and interesting group of people and always enjoy this time of fellowship spent together.

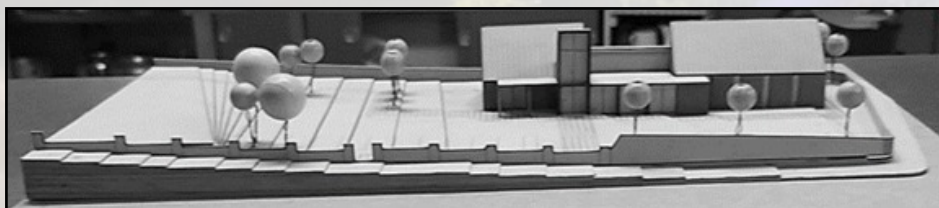
Our Building Scheme continues to play a very big part in the forefront of the minds of the Church Family and our Church Development Team work very hard behind the scenes as they seek to get the scheme moving but as reported in the last copy of the magazine sadly inflation is biting into the money already given or pledged. One piece of 'hot off the press' news is that we have just heard that St Andrew's has been awarded a £20,000 grant towards the new building! This grant has been

made by TMCP (Trustees for Methodist Church Purposes). Isn't it really good news that even though there are so many calls on their funds they consider that our project deserves a grant? One more step along the road we go! Your prayers will be much appreciated at this time. We continue to look to the Lord for His blessing on this massive project.

A **COFFEE – CAKE – DONATE** event held recently to raise money for the Disasters Emergency Committee coordinating the relief fund to help people in Syria and Turkey following the recent earthquakes was a huge success and donations from Church – Church groups – Salterhebble School families and the community raised well over **£600.00** with some Gift Aid still to be added to this amount – it was brilliant to welcome folks into our Church as part of our local community and a great result financially.

Members of the Church Family are attending a Churches Together in South Halifax Lent Course **"YOU CAN BE SERIOUS"** – at Heath United Reformed Church and are enjoying the friendship and Fellowship of these meetings.

Sending love and God's Blessings for Easter 2023 from the St Andrew's Church Family to all our Circuit Friends.



There's a Library at Brighthouse Central



Did you know that in the vestry at Central Methodist Church, Brighthouse, there's a theological library? Anyone can visit - access is available on Saturday mornings between 10 am and 12 noon when a coffee morning is held. Just ask someone how to get to the vestry where the library is housed. Otherwise phone Graham Smith on 01484 718807 for other times.

The catalogue of books, CDs, and other media is available on the Circuit website. Visit <http://www.calderdale.methodistcircuit.org.uk> (no spaces). Look under the "About Us" tab and open up the pdf.

Books can be borrowed for up to a month. Just fill in your name, what book(s) you have borrowed and the date you took them, on a clipboard.

When you bring them back, don't forget to sign them off to show they've been returned.

Audio Visual

The library has a good collection of music and video resources.

Do you need backing music for singing songs at an Alpha meeting? The library has the disk to help.

There's the backing track to Graham Kendrick's 'Rumour of Angels.'

Songs from Margaret Rizza, Taizé and Songs of fellowship, all on CD.



When it comes to DVD's there are three 'Nooma' Discussion starters by Rob Bell – 'Shells', 'Rhythm' and 'Rain' each one includes a booklet.

There are DVD's with meditations on the Psalms and Celtic reflections.

There's a host of materials from CPAS with worship resources and clip art.

Take a look at the whole catalogue (see opposite for details).

Graham Smith

Boothtown & Southowram

We are pleased to announce that Boothtown and Southowram Methodist Church have fitted the publicly accessible defibrillator on the church wall facing Boothtown Road.

Churches in Boothtown Road



This has been made possible with the help, advice and financial support of the West Yorkshire Ambulance Service Charity, the Halifax Rotary Club, Calderdale Carers and personal donations from individuals.

We must stress that this is in no way connected to the collection made last year in Boothtown, the whereabouts of these monies are unknown.

There has been a small shortfall and the church held a quiz on 18th February to help pay for this (details on our Facebook page).



As part of the New Ebenezer 200 years celebrations a brochure has been produced describing the 200 year history of Ebenezer Methodist church. These are now for sale and the cost is £5 per copy with all proceeds being donated to the Halifax Food and Support Drop In.

Copies of the brochure can be obtained from the Circuit Office (details on the website home page) or by calling the mobile number below.

From Old to New

**£5 PER COPY:
ALL FUNDS RAISED WILL GO
TO FOOD SUPPORT DROP IN**

To obtain a brochure contact:
office@calderdalemethodistcircuit.org.uk
Tel: 07588329185

St. Paul's



Before Christmas, St Paul's was wondering what it could offer to address the Winter Warm Space challenge we have all been faced with this year. Given our relatively small team and the weekly bookings already in place, it seemed as though the only time available was our Friday coffee morning. However, others were having similar thoughts and we were approached by local groups Sowerby Bridge Together and Bridge Community and, from this, Winter Warmer developed.

From 08 January to 26 March we are opening the church each Sunday afternoon from 3 pm to 6 pm and, based on what Methodists have always done best, this is all about friendship and food. Each week is a choice of menu of good, solid winter meals such as shepherd's pie, bean stew, jacket potatoes and, in recent weeks, sponge

pudding and fruit crumble, of course with custard!

Everyone is welcome and many are joining us from the adjacent blocks of flats – we now average around 30 visitors each week. Some stay for the full afternoon, others just call for a meal and several leave with an extra meal boxed up for the following day.

It is clear that we have identified a need in that many of our guests feel in some way isolated or on the margins of society with health and other problems. They appreciate the open welcome and the “no pressure or questions” approach. With the new community which is forming here, the team of volunteers from all 3 organisations have decided that we cannot now walk away from this. We are therefore looking to expand the core team and continue for the foreseeable future and will have to find a new name – Warm Welcome is winning at the moment!

A WELCOMING WARM SPACE AND A HEARTY HOT MEAL AVAILABLE EVERY SUNDAY AFTERNOON FROM JANUARY 8TH

DOORS WILL BE OPEN 3PM-6PM.

**ACTIVITIES FOR CHILDREN.
HOT MEAL AVAILABLE – PAY AS YOU FEEL
(AND IF MONEY IS A LITTLE TIGHT, THERE'S NO OBLIGATION TO PAY)**

**ANYONE INTERESTED IN JOINING THE AMAZING TEAM OF VOLUNTEERS OR FOR MORE INFO
EMAIL – BRIDGECOMMUNITYSB@GMAIL.COM**

Sowerby Bridge Together Bridge Community

BRIGHOUSE

Central

Every Friday from 8.30 am

Time for God

with Vicky Atkins,
Carolyn Stafford
and Graham Smith

Find it at

www.facebook.com/brighthousecmc/

COMMUNION WINE

WE HAVE A SUPPLY OF
NON-ALCOHOLIC
COMMUNION WINE IN THE
CIRCUIT OFFICE

IF YOU WOULD LIKE A
BOTTLE(S) PLEASE LET US
KNOW AND COLLECT FROM
THE OFFICE ON A
WEDNESDAY

WE WILL SEND AN INVOICE
TO YOUR CHURCH
TREASURER FOR THE COST
- £5.25 PER BOTTLE

Job Vacancy

We're looking for someone who might take over from Graham Smith and put together this newsletter.

Graham's compiled 32 issues and would like to step down. He's quite happy to help anyone who may be interested.

Graham can be contacted on 01484 718807 or by email graham.smith@methodist.org.uk

DTP
DESKTOP-PUBLISHING

Calderdale 
Methodist Circuit

Circuit Website

[www.calderdale
methodistcircuit.org.uk](http://www.calderdalemethodistcircuit.org.uk)

It is hoped that Issue No. 33 of this News-let-ter will come out soon.
Material for the next issue can be sent to
office@calderdalemethodistcircuit.org.uk

Please send items as soon as you have them available.

Around the Dale

The Newsletter of the Calderdale Circuit
of the Methodist Church

AROUND THE DALE ~ APRIL 2023